

PHYSICAL PARAMETERS

Lenght Without Attachment: 4600 mm
Lenght Total: 6500 mm
Width Without Attachment: 1950 mm
Width Total: 2850 mm
Attachment Width: 2850 mm
Mine Clearance Width: 2050 mm(Flail) - 2000 mm (Tiller)
Rut Width: 1950 mm

Transportation: 40HC Container, Trailer, Cargo Aircraft (C130 or similar), Helicopter

Mass | Basic Vehicle (Prime Mover W/Lubricants, No Fuel): 9750 kg
Mass | Basic vehicle (Prime Mover W/Lubricants & Fuel): 10107 kg
Mass | Detachable Unit(s) (W/Std. Flail Tool): 2600 kg
Mass | Overall (W/Std. Flail Tool, W/Lubricants, No Fuel): 12480 kg
Mass | Overall (W/Std. Flail Tool, W/Lubricants & Fuel): 12680 kg
Mass | Overall (W/Std. Tiller Tool, W/Lubricants, No Fuel): 12750 kg
Mass | Overall (W/Std. Tiller Tool, W/Lubricants & Fuel): 13050 kg
Mass | Detachable Unit(s) (W/Std. Tiller Tool): 3285 kg

ENGINE

Type: Diesel
Fuel Consumption: 40-48 L/H Max. Power
Engine Power: 221 kW @ 2500 RPM 300 Hp
Cooling System: Water Cooling
Fuel capacity: 250 L
Engine Oil: 10 W 40 - 19,5 L
Pump Pack Drive Gearbox: 80 W 90, 5,2 L
Hydraulic Oil Capacity: 250 L

UNDERCARRIAGE

Tracks: Steel
Ground Pressure: 0,63 kg/cm³
Ground Clearance: 320 mm
Power Transmission: Hydrostatic System
Transport Speed: 4 km/s
Operating Speed in Clearing Mode: 0,5-1 km/s
Hill Climb: 50%
Slope: 40%
Trench Width (W/Std. Double Tool): 1.5m
Operating Speed:
Light Soil | Medium Vegetation: 1900 m²/h
Medium Soil | Medium Vegetation: 1425 m²/h
Heavy Soil | Dense Vegetation: 950 m²/h

ARMOR

Hull: 6-20 mm HARDOX 450
Arms: S355- HARDOX450
Chassis: 6,5 mm ARMOX 500T
Attachment: 15 mm HARDOX450
Attachment Chassis: 6,5 mm ARMOX500T

ATTACHMENTS

Attachment Type: Tiller and Flail
Resistance to Explosion: 8,5 kg TNT
Clearance Depth (Flail/Tiller): Up to 30 cm
Flail/Tiller Tool Dimensions (LxWxH): 2.145x2.850x1.610 mm
Flail/Tiller Tool Weight: 485 kg / 1.165 kg
Flail Clearing Width: 2.050 mm
Tiller Clearing Width: 2.000 mm
Flail Drum Diameter (mm): 1.650 mm
Flail Rotation Speed: 800 rpm
Number of Chains (Flail Attachment): 42
Tiller Drum Diameter (mm): 1.460 mm
Tiller Rotation Speed (rpm): 400 rpm
Number of Chisels (Tiller Tool): 52
Control of Clearance Depth (Flail/Tiller): Adjustable Height of Flail Skids & Boom Hydraulic Control
Other Attachable Tools: Cylinder, Dozer Blade, Dozer Clamp
Vegetation Clearing Width: 2050 mm

ELECTRIC SYSTEM

On-Board Control Panel:
12-inch Remote Control Unit
4,3-inch Electric Panel Screen
4,3-inch Hydraulic Control Panel Screen
Video Recording Device
4 Cameras With 360-Degree Angle
2 Led Flashers
2 Led Lighting
2 Slope Sensors
Antenna For Encrypted Communication With 128Bit - 256 Bit SSL
ECU For Engine and Valve Control

REMOTE CONTROL CHARACTERISTICS

Remote Control Distance: >5000 m
Battery Life: >8 Hours

- Engine Water, Oil and Hydraulic Oil Temperature Gauge
- Fuel, Engine Oil and Hydraulic Oil Level Gauge
- Engine RPM and Operating Hours Indicator
- Vehicle Battery Charge and Voltage Indicator
- Remote Control Battery Charge Indicator
- Engine Trouble Codes
- Vehicle Horizontal and Vertical Tilt Indicator
- Possible Power Source: 12 V
- Simultaneous Video Display
- Consumable and Replaceable Material Usage Indicator
- Vehicle Info, Status and Feedback

ASFAT



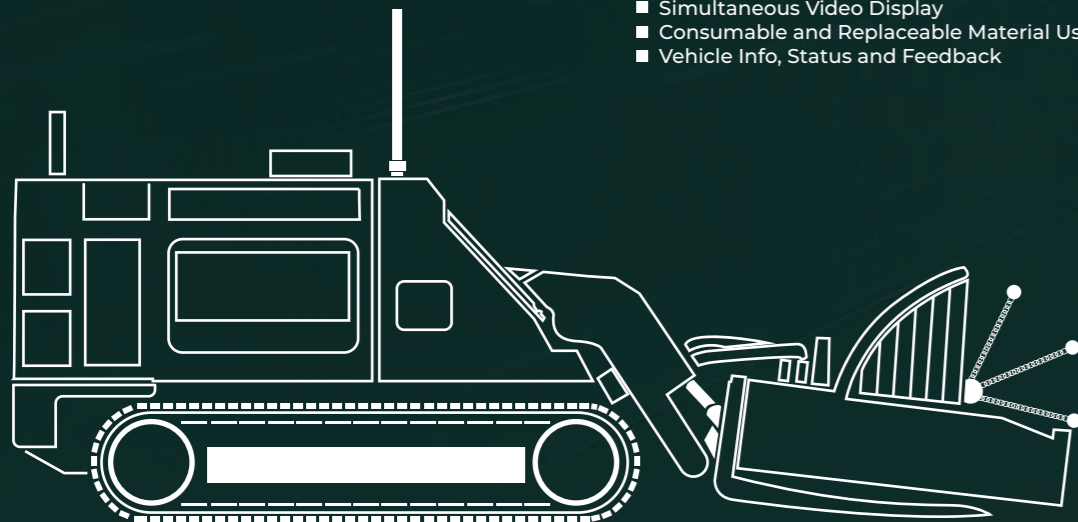
MSB_ASFAT ASFAT msb_asfat @asfat

asfat.com.tr

ASFAT

MEMATT

MECHANICAL MINE CLEARING VEHICLE



STRONGER TOGETHER

MEMATT

The remote-controlled Mechanical Mine Clearing Vehicle, designed and produced with the latest technology, neutralizes anti-personnel and anti-tank mines in various types of fields.

2X TELESCOPIC CAMERAS



WHITE LIGHTING



ACTIVE AIR/DUST FILTRATION SYSTEM



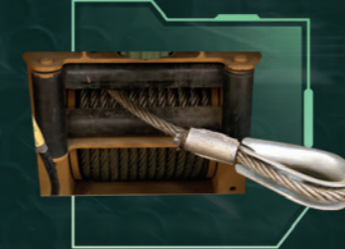
YELLOW BEACON LAMP



RED WARNING LAMP



SELF-RESCUE WINCH 20 TONS CAPACITY



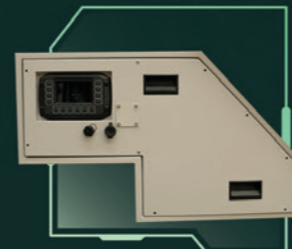
DESIGN PREVENTING DUST INGRESS



4X SIDE CAMERAS



IMPROVED VEHICLE ELECTRIC AND ELECTRONICS



USER FRIENDLY INTERFACE



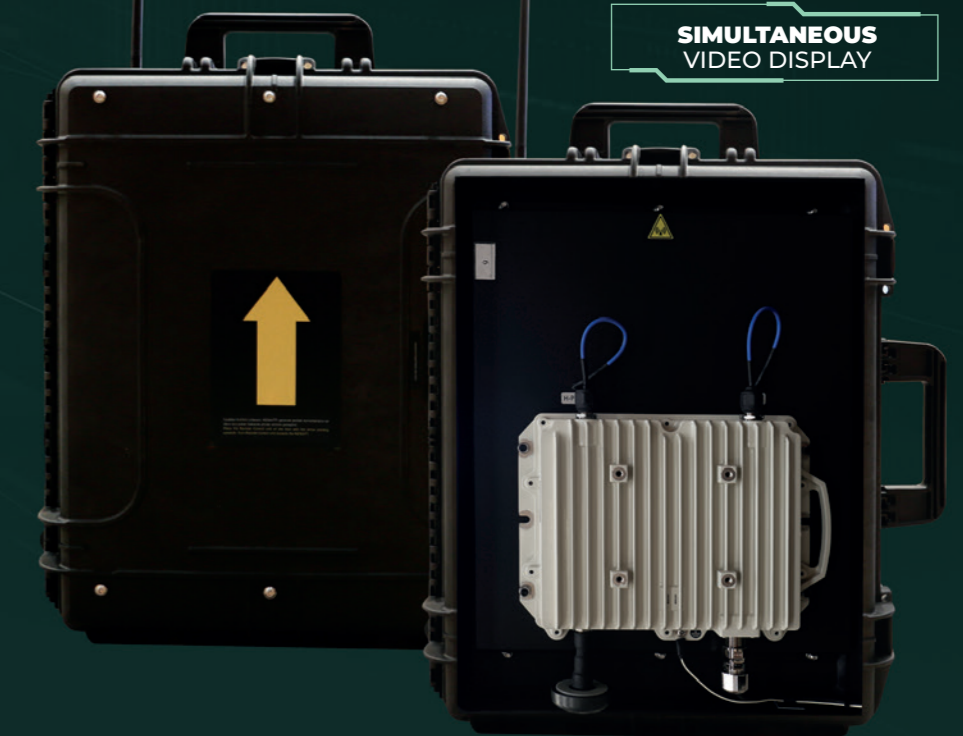
ENCRYPTED COMMUNICATION

5000 M Remote Control Distance

BATTERY LIFE >8 hours

RESISTANT TO ENVIRONMENTAL CONDITIONS

SIMULTANEOUS VIDEO DISPLAY



SHOCK ABSORBER



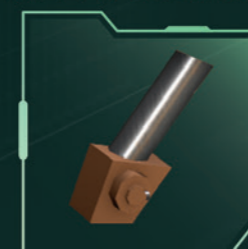
HOOK INTERFACE FOR LAND AND AIR TRANSPORTATION



FLAIL AND TILLER ATTACHMENT



ATTACHMENT LEVELLING SYSTEM



ATTACHMENT LEVEL ADJUSTMENT MECHANISM

